

Product data sheet

Specifications

SQUARE D



Manual Starter, fractional horsepower, 16A, 1 pole, 1 HP at 277 VAC, toggle operated, no indicator, NEMA 1 enclosure

2510FG1

Product availability: Stock - Normally stocked in distribution facility

Price*: 90.37 USD

Main

Product	Single Unit Manual Starter
Type	F
Overload Relay Type	Melting alloy

Complementary

Current Rating	16 A
Cable entry	0.5" and 0.75" knock-outs (top and bottom)
Horsepower Rating	1 hp 115 V AC 1 hp 230 V AC 1 hp 277 V AC
Voltage Rating	277 V AC
Number of Poles	1P
Control Unit	Toggle switch
Number of Phases	1 phase
Pilot Light	No indicator
Reset	Manual
Motor starter type	Non reversing
Electrical Connection	Screw clamp terminals
Wire Gauge	AWG 14...AWG 12 copper
Height	4.25 in (107.95 mm)
Width	2.44 in (61.98 mm)
Depth	2.75 in (69.85 mm)
Net Weight	0.79 lb(US) (0.36 kg)

Environment

Product Certifications	UL listed file E42243 CCN NLRV CSA LR25490 class 3211 05
NEMA Enclosure Rating	NEMA 1 Plastic standard size

Ordering and shipping details

Category	US10CP121101
----------	--------------

Price is "List Price" and may be subject to a trade discount – check with your local distributor or retailer for actual price.

Discount Schedule	0CP1
GTIN	785901553939
Returnability	Yes
Country of origin	MX

Packing Units

Unit Type of Package 1	PCE
Number of Units in Package 1	1
Package 1 Height	2.600 in (6.604 cm)
Package 1 Width	3.200 in (8.128 cm)
Package 1 Length	5.0000000000 in (12.700 cm)
Package 1 Weight	12.160 oz (344.730 g)

Contractual warranty

Warranty	18 months
----------	-----------

Sustainability

Green Premium™ label is Schneider Electric's commitment to delivering products with best-in-class environmental performance. Green Premium promises compliance with the latest regulations, transparency on environmental impacts, as well as circular and low-CO₂ products.

Guide to assessing product sustainability is a white paper that clarifies global eco-label standards and how to interpret environmental declarations.

[Learn more about Green Premium >](#)

[Guide to assess a product's sustainability >](#)

Well-being performance



Pvc Free

Reach Regulation

[REACH Declaration](#)

Eu Rohs Directive

Not compliant

China Rohs Regulation

[China RoHS declaration](#)

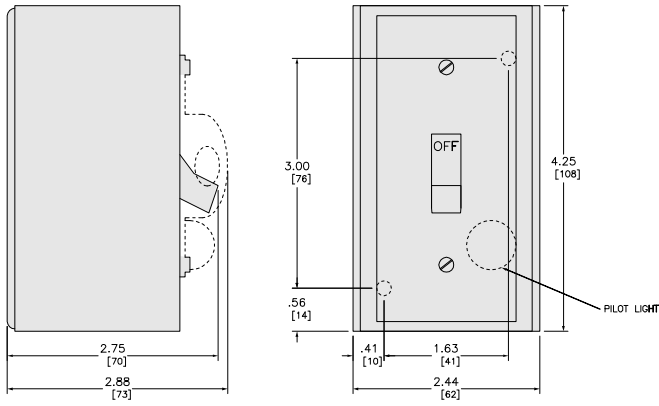
Product out of China RoHS scope. Substance declaration for your information.

California Proposition 65

WARNING: This product can expose you to chemicals including: Lead and lead compounds, which is known to the State of California to cause cancer and birth defects or other reproductive harm. For more information go to www.P65Warnings.ca.gov

Technical Illustration

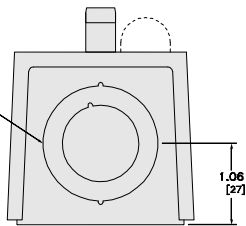
Dimensions



in.
[mm]

.50 - .75 CONDUIT KNOCKOUT
[13] - [19] BOTH ENDS

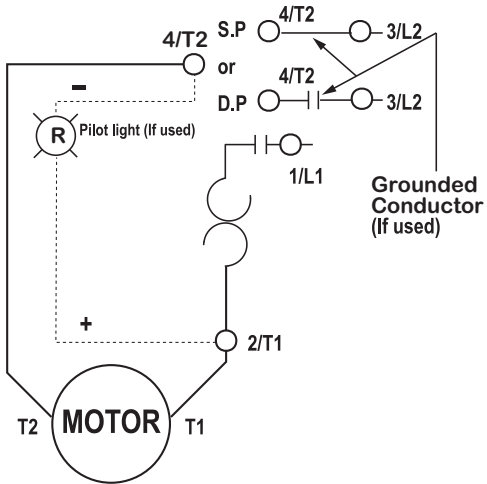
NO PILOT LIGHT	RED PILOT LIGHT	GREEN PILOT LIGHT
2510FG1	2510FG1P	2510FG1PG
2510FG2	2510FG2P	2510FG2PG
2510FG5	2510FG5P	2510FG5PG
2510FG6	2510FG6P	2510FG6PG



ALL DIMENSIONS ARE APPROXIMATE. REFER TO TECHNICAL DRAWING AND TECHNICAL DOCUMENTS FOR COMPLETE INFORMATION.

Technical Illustration

Wiring diagram



REFER TO INSTRUCTION SHEET AND
TECHNICAL DOCUMENTATION FOR COMPLETE INFORMATION